



BIGTRENDS.COM

WEEKLY OPTIONS BOOT CAMP

SESSION 3

The Weekly Options Warrior Strategy Revealed...

PRICE HEADLEY, CFA, CMT

➤ Let's Get Started!



Educate

Understand the tools you have for trading. Learn what this indicator is and how you can profit from it with our unique tactics.



Explore

Put your knowledge into action. Practice and start using your new trading tools to find and trade opportunities



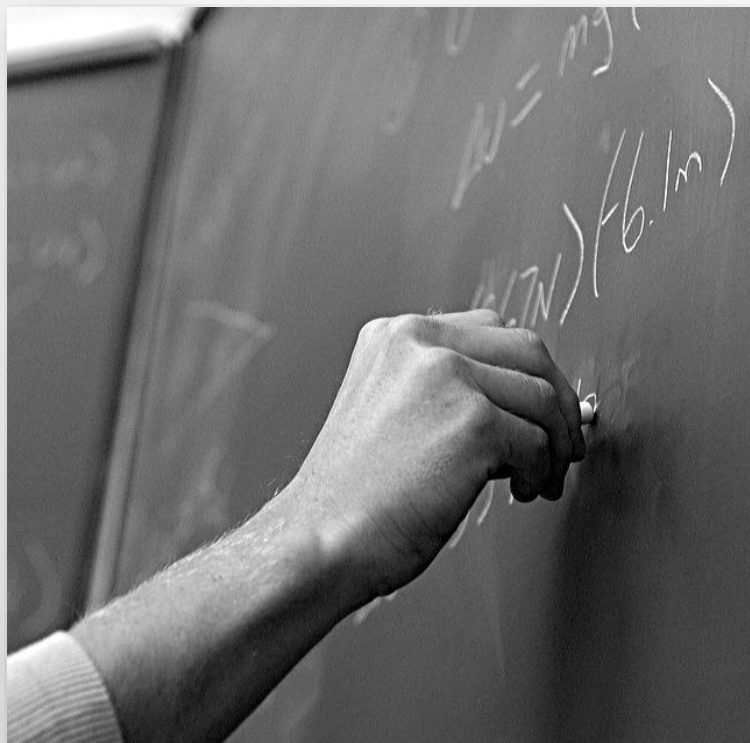
Execute

Never trade alone. Join us in our trading workshops to maximize your new found expertise. We'll trade with you.

BigTrends Coaching

The information provided in this presentation is based on our proprietary research and is intended for illustrative purposes only and are not to be construed as specific advisory recommendations. Stocks and options trading have large potential rewards, but also large potential risk. The past performance of any trading system or methodology is not necessarily indicative of future results. See our Terms of Use on the BigTrends.com homepage for more information.

What You Will Learn Today...



Key Points

1. The **Current Focus List** for Weekly Options Warrior Trades
2. Why Do We Use **Weekly** Options?
3. More Detail on the **ADX** and **DMI** Indicators
4. Case Studies – **Modeling Success**

The **Weekly Options Warrior Stocks...**

- **MSFT** – Microsoft
(Long Only)
- **AXP** – American Express
(Short Only)
- **PYPL** – PayPal (Short Only)
- **AMD** – Advanced Micro Devices
- **MNST** – Monster Beverage
- **PM** – Philip Morris
- **CHWY** – Chewy.com
- **NEM** – Newmont Goldcorp
- **LOW** – Lowe's
- **EW** – Edwards Lifesciences
- **APA** – Apache Corp.
- **BIDU** – Baidu
- And more will be added over time!

Why should you care about this strategy?

Recent Success Story:

- The System Bought Philip Morris (PM) 96 Puts at \$3.50...
- Then sold at \$6.20 the same day for a +77.14% return
- That's +\$540 in Profit !
(Trading Just 2 Contracts)

PAST PERFORMANCE DOESN'T GUARANTEE FUTURE RESULTS

Steady Growth – Even on a Small Account!

WEEKLY OPTIONS WARRIOR = +\$1,623 PROFIT

TRADING
WEEKLY OPTIONS

-
+\$324.60 PROFIT
PER MONTH

CLOSED TRADES FROM
05/17/22-10/17/22

+\$1,623

PROFIT
(5 MONTHS)

RETURN ON A
\$5K ACCOUNT

-
'ALLOCATE UP TO
\$1K PER TRADE'

WHILE THE S&P 500 (SPY) LOST -\$620.50
OVER THE SAME TIME-PERIOD

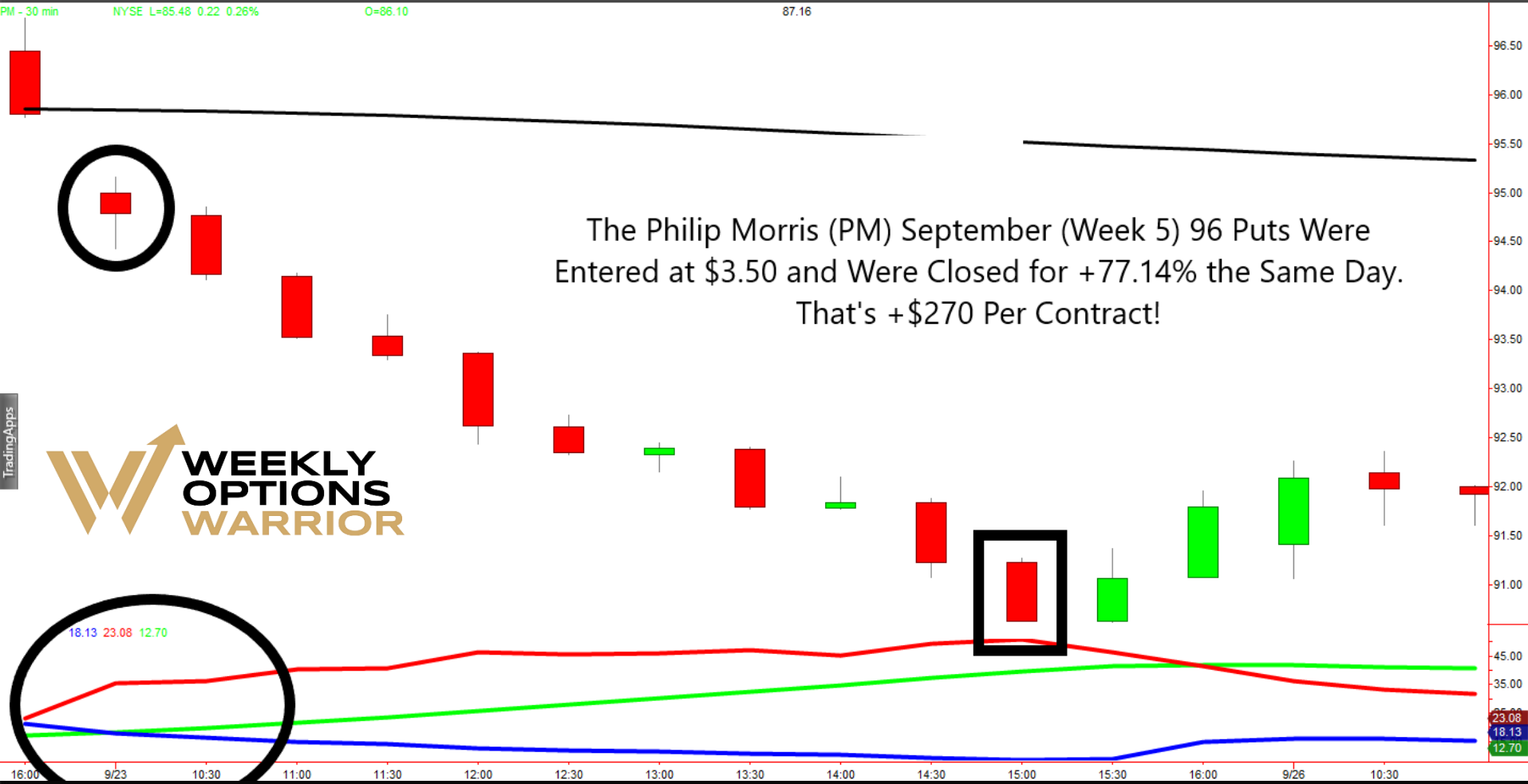
How did I find those trades?

Here are some charts to
show you the process...

www.bigtrends.com



Philip Morris (PM)

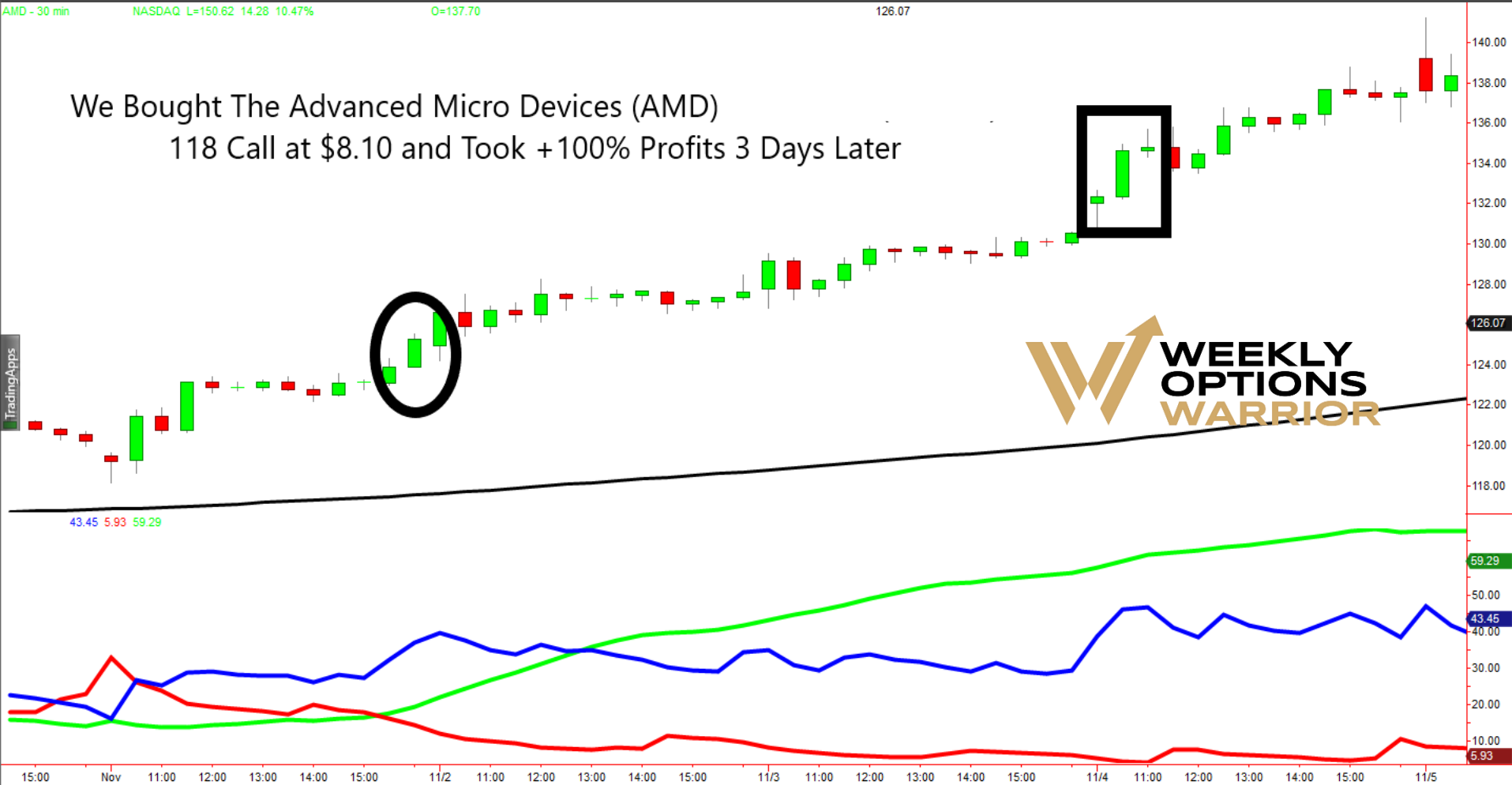


PAST PERFORMANCE DOESN'T GUARANTEE FUTURE RESULTS

www.bigtrends.com



Advanced Micro Devices (AMD)



PAST PERFORMANCE DOESN'T GUARANTEE FUTURE RESULTS

www.bigtrends.com

 **BIG TRENDS**

Why Weekly Options?

Key Benefits

- For fast moving stocks, WEEKLY Options are **IDEAL**
- Options that Expire Weekly = Low Time Premium and Higher Leverage
- Provide targeted opportunity to take advantage of events and technical momentum shifts



Higher Profit Alternative to Buying Stock Shares

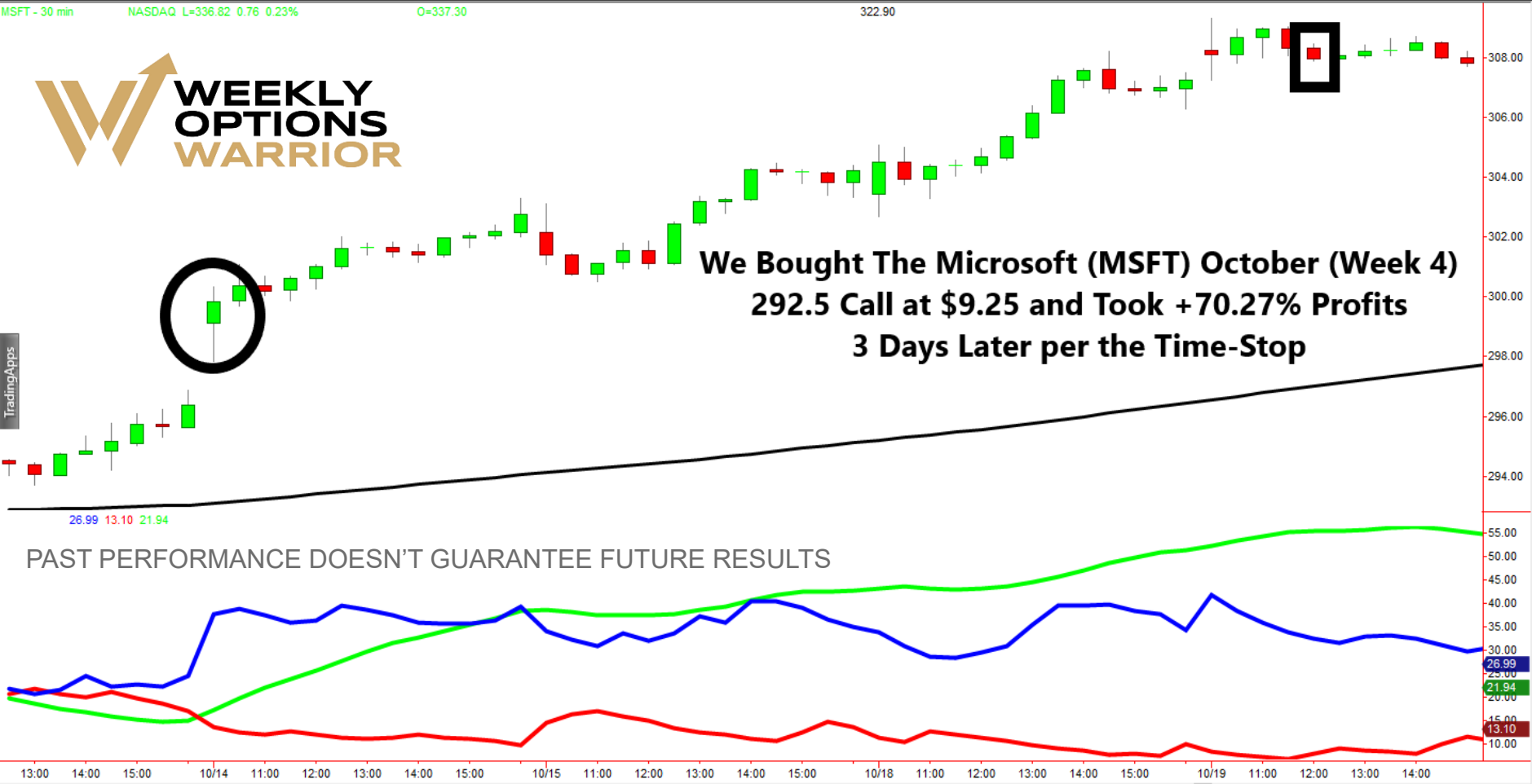
From Another Angle...



Stock Substitute

- Use In the Money Options (or Near the Money Options) to control the underlying stock for a very small percentage of the normal cost...
- Why buy when it's cheaper to rent?
- This is where true Leverage kicks in
- MSFT 100 shares = \$22,680
- MSFT 1 Call up to \$10.00 max (\$1,000)
- Leverage Potential 22X or more

Microsoft (MSFT)



**We Bought The Microsoft (MSFT) October (Week 4)
292.5 Call at \$9.25 and Took +70.27% Profits
3 Days Later per the Time-Stop**

PAST PERFORMANCE DOESN'T GUARANTEE FUTURE RESULTS

www.bigtrends.com



What is DMI ?

- **DMI = Directional Movement Index**
- **Welles Wilder (who also invented RSI) noted that the “True Range” for a stock should include the amount of the gap, if any**
- **Average True Range (ATR) shows how much total movement you are getting in a trend**
- **DMI shows the net NEW movement you get (i.e., higher highs and higher lows) – this helps define Trends vs. Ranges**

What is ADX ?

- **ADX = Average Directional Movement Index**
- **This is an Average of the possible configurations of the DMI+ and DMI- lines**
- **The Directional Movement is divided by the True Range in order to make directional movement relative to true range.**

Let's look at some Real-Time Charts...

To see what signals could be setting up
for the **W.O.W.** Stocks...

www.bigtrends.com



Weekly Options Warrior - Re-Cap...

1. Build a Focus List of **Fast-Moving Stocks**
2. Select **Weekly Options**
Using a Range-Based Formula
3. Structure a minimum **2-to-1**
Reward-to-Risk Ratio
4. Let a **Time-Tested Momentum System**
Show When to Enter and When to Exit Trades

Thank you for attending the

Weekly Options Warrior

Boot Camp Session!

Be sure to check your
BigTrends Insider Account

for your other
Weekly Options Boot Camp
sessions...

members.bigtrends.com

